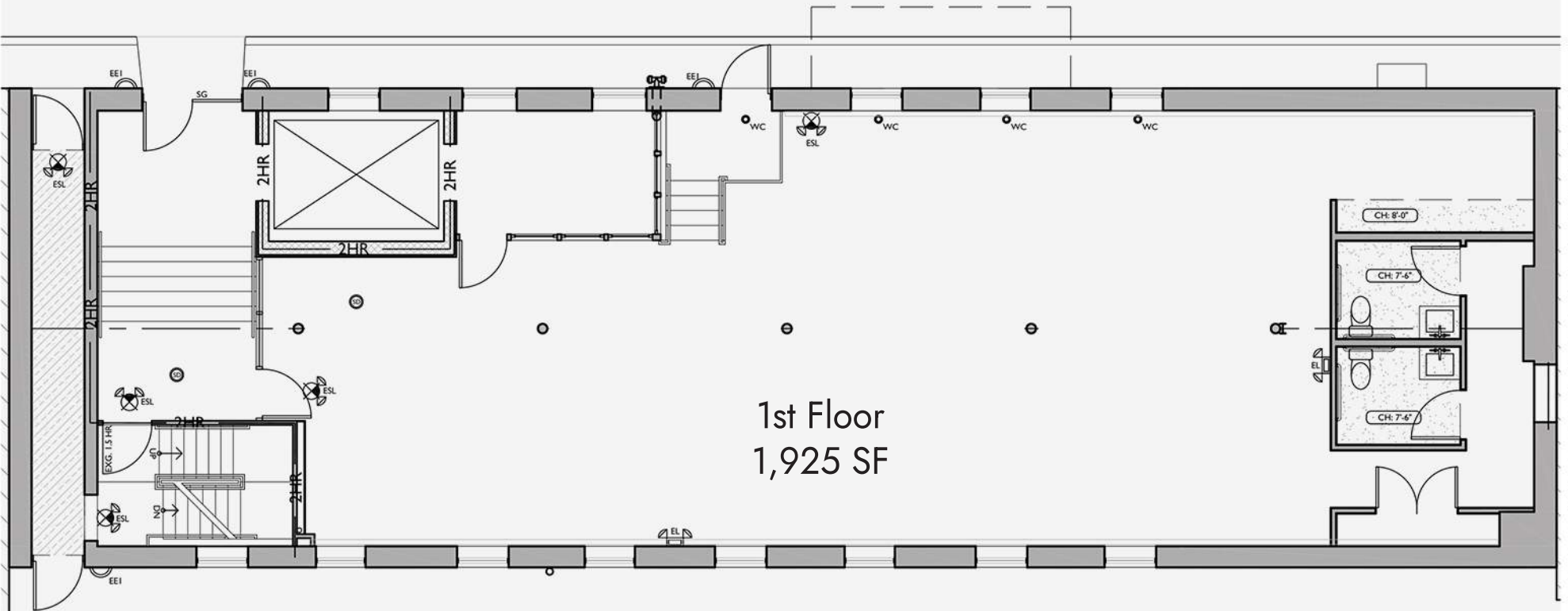




OFFICE FOR LEASE  
1810 Campbell Alley, OTR

urban  
FAST  
FO>WA>D  
REAL ESTATE & URBAN PLANNING

CAMPBELL ALLEY



1st Floor  
1,925 SF



## FLOOR PLAN

1,925 Square Foot open office with a conference area, two bathrooms, and a kitchenette.

urban  
FAST  
FO>WA>D

REAL ESTATE & URBAN PLANNING



1810 Campbell

## LOCATION

Steps from historic Findlay Market, the Streetcar, and the Central Parkway Bike Path.

Abundant amenities featuring some of the region's best coffee, lunch, and happy hour options.

urban  
FAST  
FO>WA>D

REAL ESTATE & URBAN PLANNING



## CONTACT

Blake Bartley

513 675-6351

Blake@urbanfastforward.com

urban  
FAST  
FO>WA>D

REAL ESTATE & URBAN PLANNING